









Welcome to Svalbard Airport



Ambition: To be an efficient and friendly start and end point for an arctic adventure

- Flying to & from Svalbard
 - Preparations and requirements
 - Insights and learnings
- Summer Season 2024
 - Capacity and traffic volumes by now

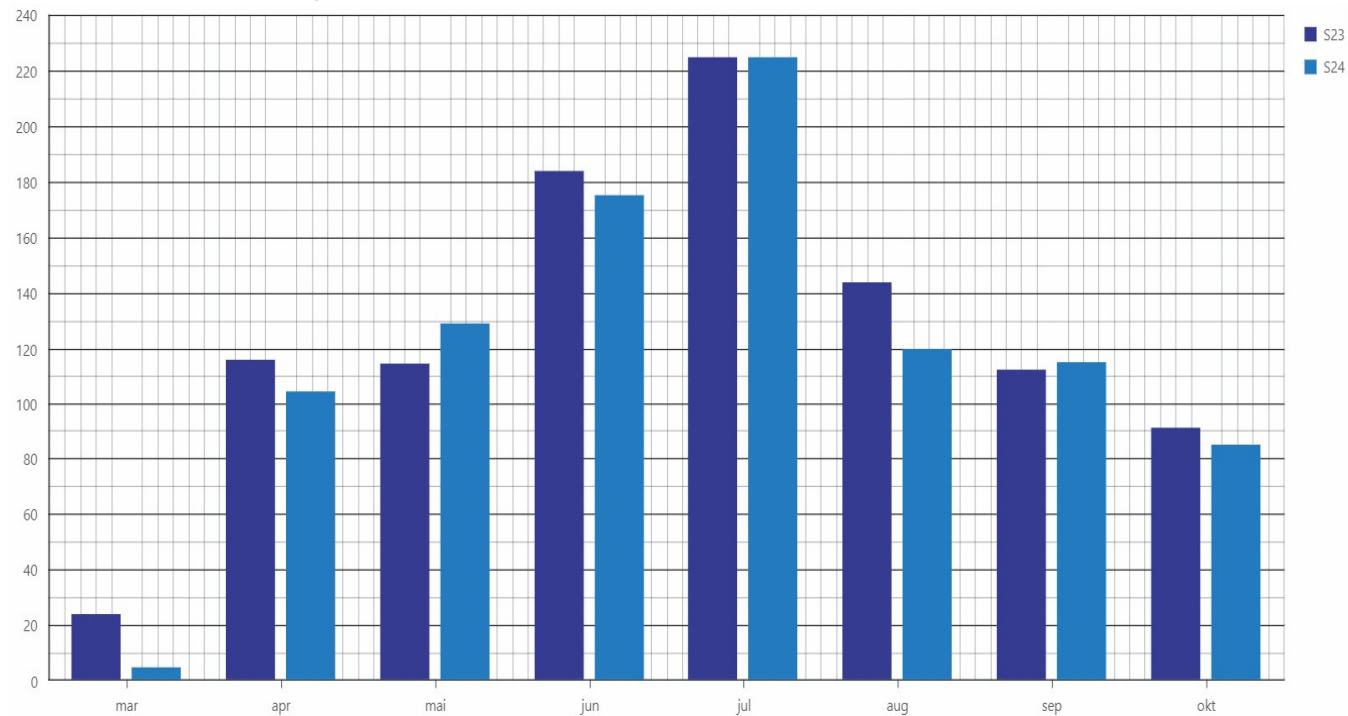
Information – Flying to & from Svalbard

 Prerequisites	 Airport	  	Airport 
<p>SLOTS (A/D) must be confirmed from ACN</p> <p><i>Applications after Feb 15 will be allocated according to the «first-come, first-serve» principle and only for times with available capacity and resources</i></p>	<p>Passengers: Might experience “Person-og varekontroll” upon arrival</p> <ul style="list-style-type: none"> - <i>Not active for all flights, but applies to scheduled flights, charter and GA</i> - <u>Identity verification (Police)</u>: passengers are led through new area for "personal control“ before picking up luggage - <u>Customs check (Customs)</u>: passengers are selected for control after having collected their luggage 	<p>Bus transport between airport and harbour must be booked well in advance</p>	<p>The terminal is only open 2 hours before any scheduled departure (not open 24/7)</p> <p>Will be check-in machines available in Svalbardbutikken and in some hotels for passengers flying with SAS and Norwegian (not for other airlines)</p>
<p>Traffic Permit – must be obtained from CAA</p>	<p>Luggage: alternative transport to the harbour must be agreed in advance</p>		<p>Luggage: alternative transport from the harbour must be agreed in advance</p>
<p>Passenger lists must be sent to Police 48 hours ahead of arrival</p>	<ul style="list-style-type: none"> • Aircraft cleaning is not available • Garbage disposal is not possible • No water & toilet services available 		
<p>Handling services must be requested & confirmed from Avinor</p>	<p>Not allowed to hand out clothes or other equipment in the terminal</p>		<p>Not allowed to hand out food and beverages in the terminal (neither for waiting in terminal before flight)</p>

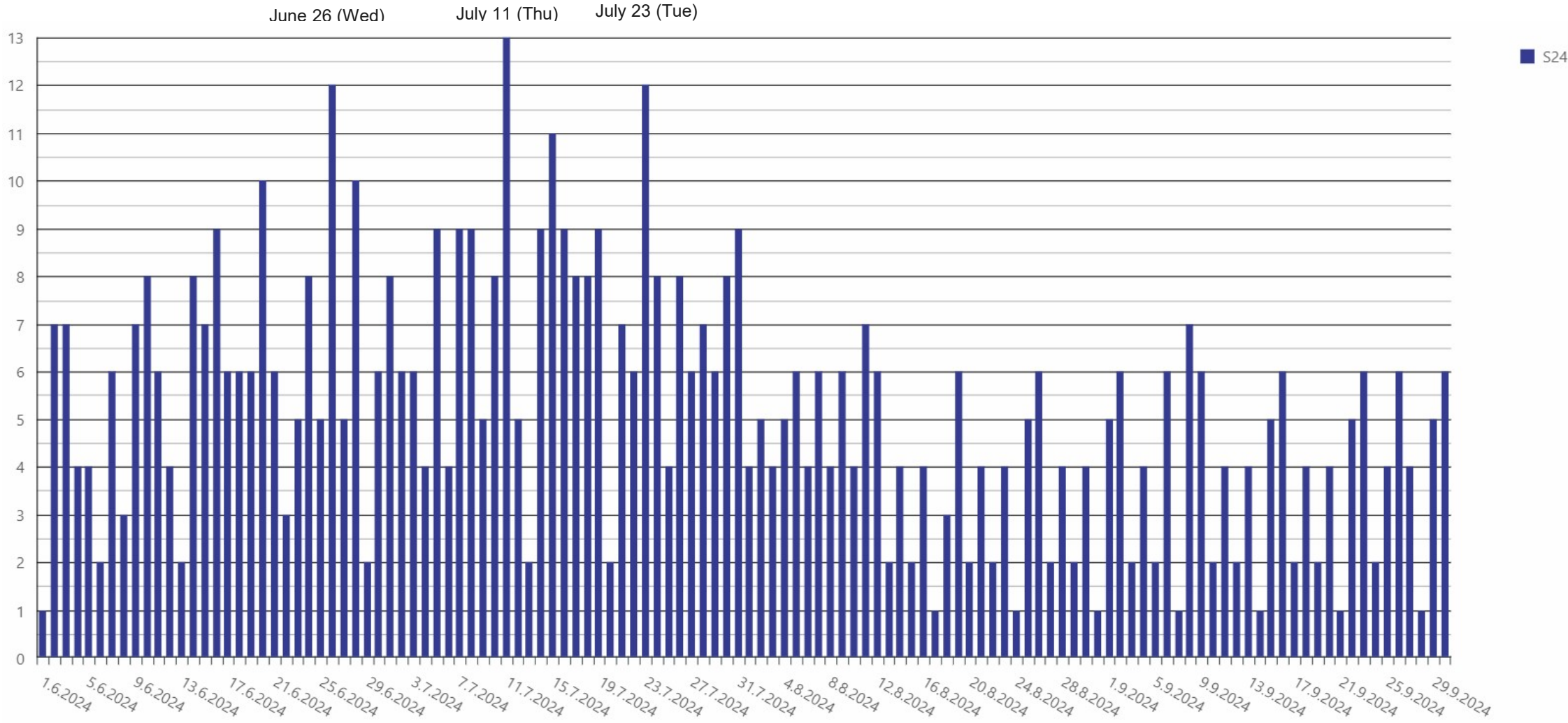


Summer 2024 | SLOT Requests

- Airport capacity within defined opening hours as in 2023
 - Limit of 6 flight arrivals per day + GA + Cargo & Mail
 - Minimum 30 minutes between one STD and next STA
- Status requested SLOTS – S24 (light blue) vs S23 (dark blue)
 - June and August less busy than 2023
 - Less charter flights every month
 - GA-flights is not included in these numbers



Summer 2024 | Busy days in the airport - June to September





No drone zone

Unauthorized drone flying is prohibited in Longyearbyen, Svalbard airport and the surrounding mountains.

The prohibited area is a 5 km radius from the airport.

Drone flying in prohibited area can lead to:

- Criminal prosecution
- Confiscation of drone

For more information,
scan QR-kode





Thanks for listening !!

if you have any questions, please contact the airport administration:
svalbard.airport@avinor.no