



KYSTVERKET
NORWEGIAN COASTAL ADMINISTRATION

Information from the Norwegian Coastal Administration regarding Svalbard

– Clean, safe and efficient seaways

Vardø VTS



KYSTVERKET
NORWEGIAN COASTAL ADMINISTRATION

The NCA broadcast navigational warnings for the Svalbard area:

- NAVAREA warnings by satellite; and
- Coastal warnings by NAVTEX.

Vessels are encouraged to contact Vardø VTS if in need for assistance.

Note: Vessels in a distress situation that could lead to a Search and Rescue operation must contact the Norwegian JRCC.

Modernization of Marine Aids to Navigation



Modernization of aero lights



Work done in 2022/2026

- Light (incl. racon) Sparreneset Hinlopen, 2022
- Light Sørgattet (Mesteinane cairn), 2023
- Establish sector lights Sørgattet, 2024
- IALA standard, 2024
- Plan for refurbish Akseløya 2026 (install Litus Lux)



AtoNs

Maritime lights: 19

Beacons/landmarks: 10

Cairns: 2

Racons: 3

Buoys: 3

Aero lights: 27

Note:

Vessels are encouraged to notify the NCA of casualties to lights, buoys and other aids to navigation.



Enhancing maritime monitoring

AISsat-4
Norwegian Coastal Administration
Norwegian Space Agency
Launched March 30th 2026



KYSTVERKET

NOTIFY KYSTVERKET ↓

NEWS SERVICES

MENU ☰

SEARCH 🔍

NORSK

Frontpage / News / New Satellite for Ocean Monitoring Built in Record Time

New Satellite for Ocean Monitoring Built in Record Time

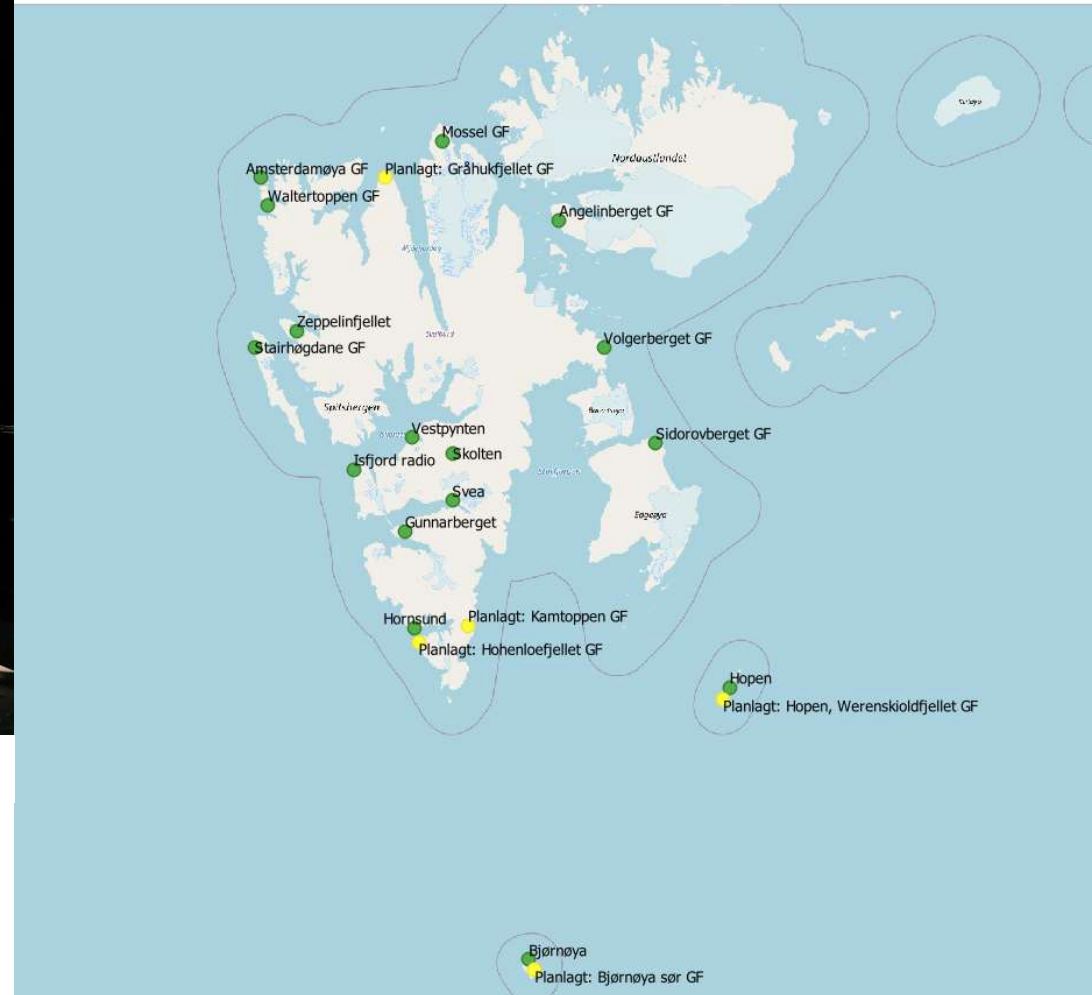


The Norwegian Coastal Administration has ordered a new AIS satellite. In collaboration with the Norwegian Space Agency, this entirely Norwegian low-orbit satellite will be built in record time. AISsat-4 will be a valuable addition at a time when several of our operational satellites are nearing the end of their expected lifespan.

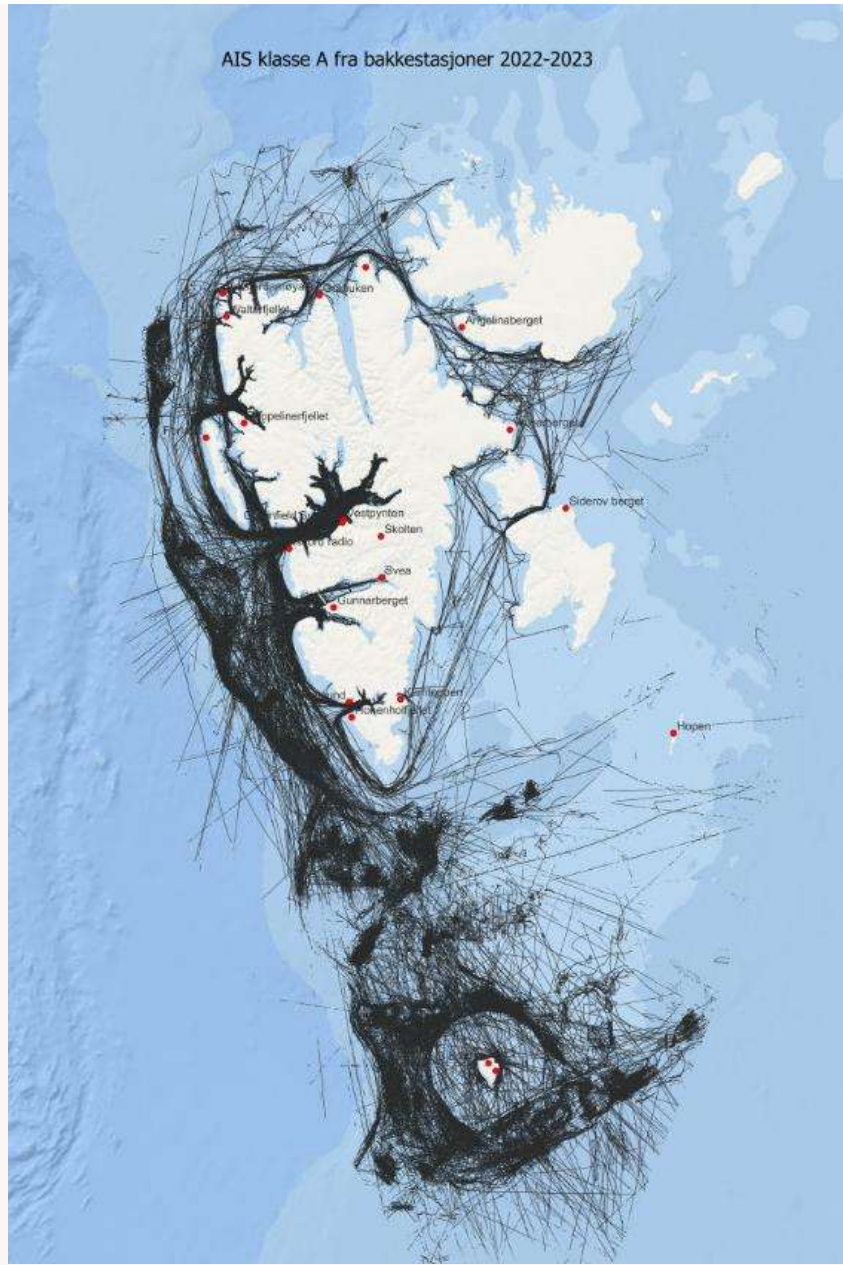
Published 2/20/2025. Updated 2/20/2025.



19 AIS Shore-based stations operational in Svalbard



Shore-based AIS Svalbard





Pilotage on Svalbard



The NCA is responsible for the pilot service on Svalbard with pilots stationed in Longyearbyen. Due to the extra logistical challenges on Svalbard, we kindly ask vessels to:

- make their pre-notification as early as possible
- update the notification when necessary
- All cruise vessels must describe the voyage they intend to undertake in Svalbard for the 2026 season.

Note: The NCA might need several days pre-notification in order to position a pilot for assignments on Svalbard.

ArcticInfo

Default settings

Map layers

- Wind restrictions cruise
- Vessels (AIS)
- Use default filters

Ice

Area warnings

Weather and waves

Map details

- Place names at Svalbard and Jan Mayen
- Place names in sea - Norway
- Place descriptions from the Norwegian Pilot Guide
- Sailing directions from the Norwegian Pilot Guide
- Maritime boundaries Norway
- Seamarks
- Rocks
- Depth curves
- Depth points
- Protected areas
- Disembarkation sites
- Helipads

Background maps

BarentsWatch KYSTVERKET

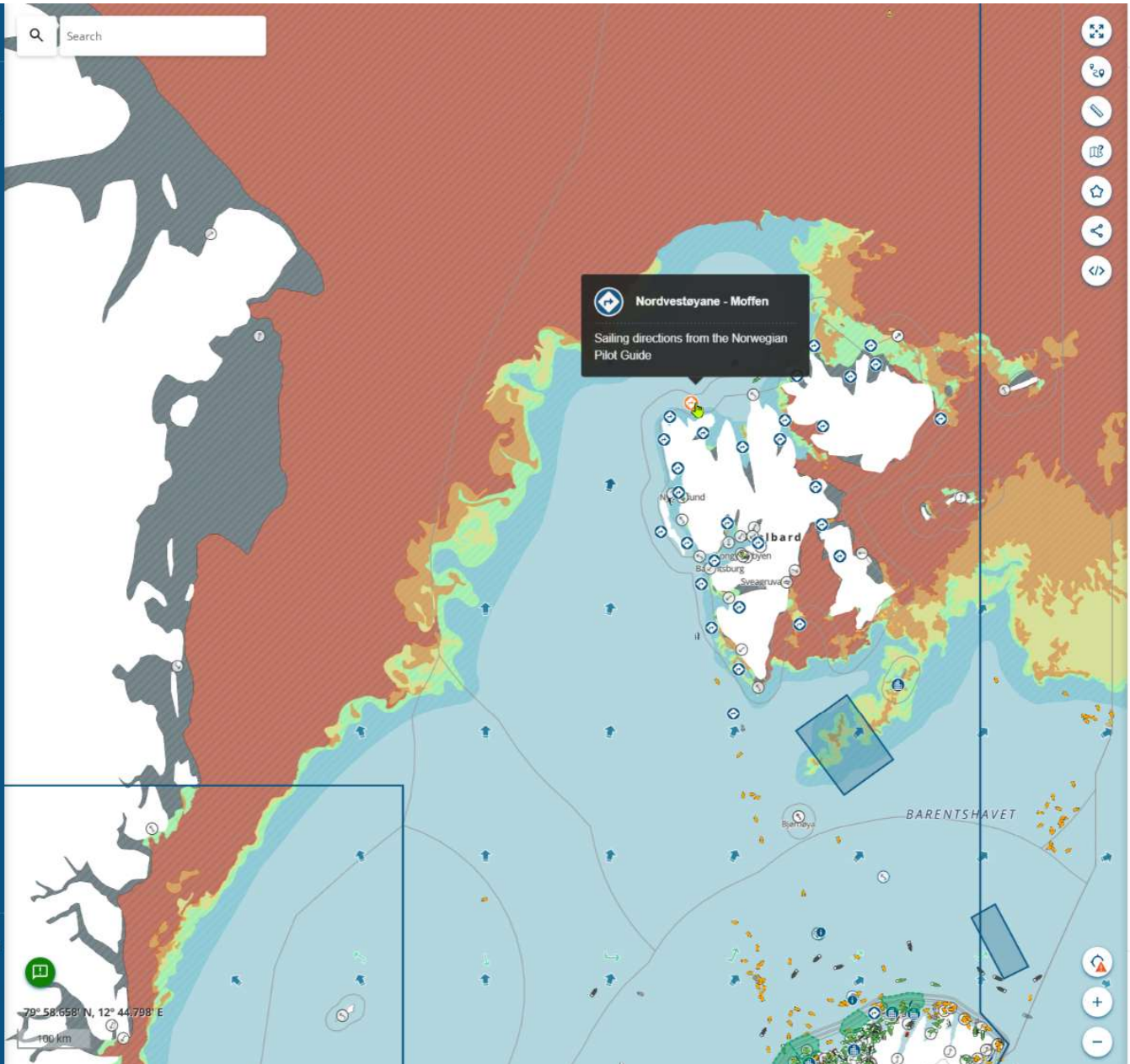
Map layers

- Settings
- About
- Eivind
- Offline controls
- Norsk
- Feedback
- Logout

Wed 02:24 PM GMT+2

v.26.4.20

Width



Nordvestøyane - Moffen

Sailing directions from the Norwegian Pilot Guide

Add favorite

Copy link

Sailing description

The depths from the north of Nordvestøyane and eastward towards the island Moffen are very uneven, and if you sail along 79° 57' N, the depths vary between just under 30 meters and close to 200 meters.

Larger vessels that sail outside all the islands will at a distance of 5 cables north of Kobbskjera should continue on a course due east (along 79° 55' N) and then go clear of the 20 m contour north of Velkomstpynten.

The island Moffen is approximately 2 NM long and 1.2 NM wide in the north. The entire drop-shaped perimeter consists of a narrow sandbar about 2 meters high that surrounds a shallow lagoon. There is also a sandy seabed around the entire island, as it forms the top of an 8 NM long bank.

When sailing north of Moffen mariners should be aware of the 9 m underwater rock 10 NM north of the island

Caution

Moffen Nature Reserve

Moffen is a nature reserve. During the summer, more specifically from May 15th to September 15th, access to the island is prohibited. The protected area includes the island itself and a sea zone extending up to 300 meters from the shore or skerries at the lowest water level.

Since the island is completely flat, it is easily accessible to marine mammals. The area is particularly an important resting place for walruses, but also an important nesting site for birds. See the "Regulations relating to the protection of the Moffen Nature Reserve in Svalbard" on lovdata.no for a complete overview of the protection regulations in the area.

Data sources

Sailing directions from the Norwegian Pilot Guide

Data source: [Kartverket](#)

Latest update: Apr 15, 2026, 12:35 PM

Home

Width

ArcticInfo

Default settings

- Wind restrictions cruise
- Vessels (AIS)
- [Use default filters](#)

Ice

Area warnings

Weather and waves

Map details

- Place names at Svalbard and Jan Mayen
- Place names in sea - Norway
- Place descriptions from the Norwegian Pilot Guide
- Sailing directions from the Norwegian Pilot Guide
- Maritime boundaries Norway
- Seamarks
- Rocks
- Depth curves
- Depth points
- Protected areas
- Disembarkation sites
- Helipads

Background maps

BarentsWatch KYSTVERKET

Map layers

Settings

About

Evind

Offline controls

Norsk

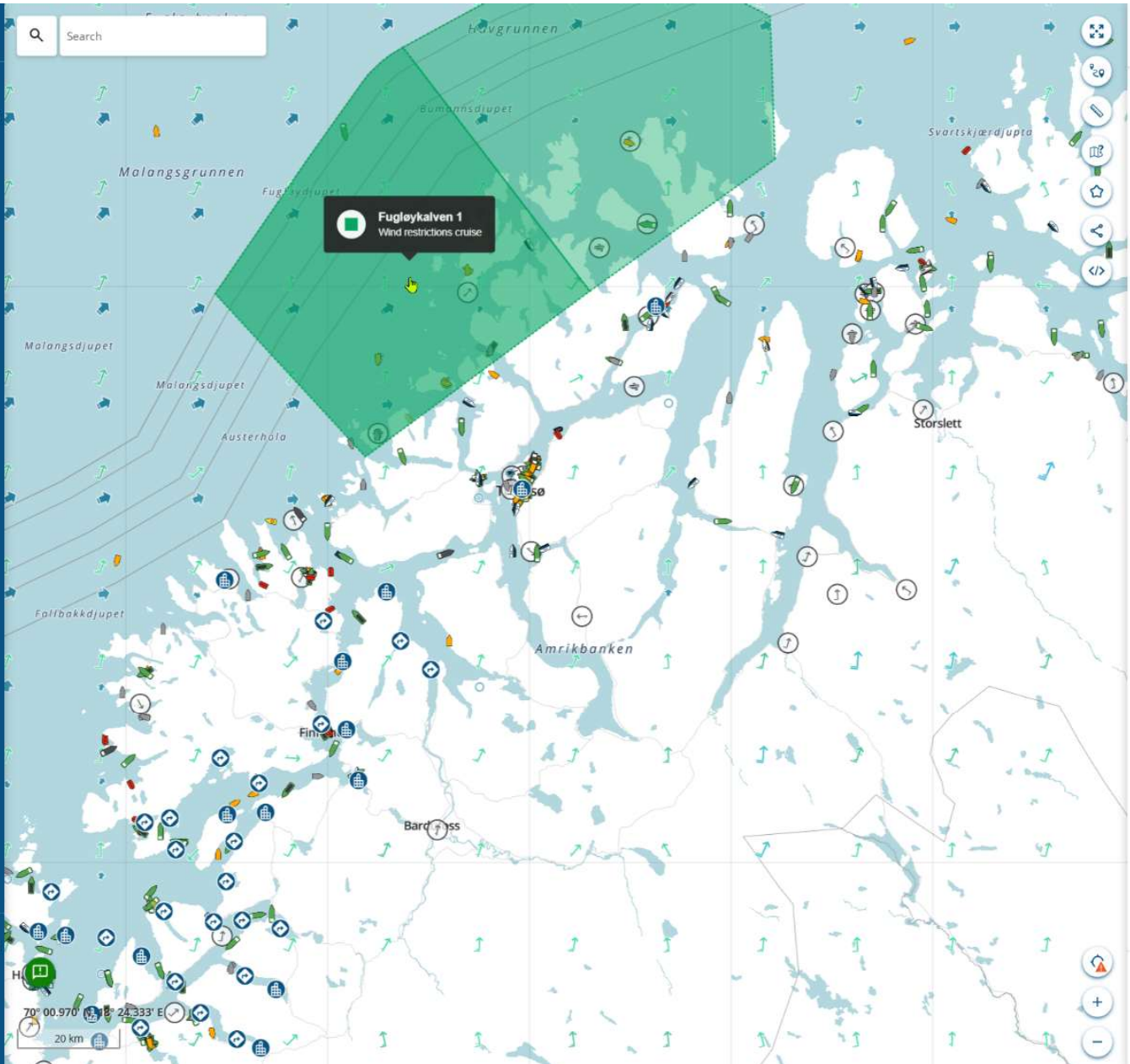
Feedback

Logout

Wed 02:26 PM GMT+2

v.26.4.20

Width



Fugløykalven 1 ✕

Wind restrictions cruise

Add favorite

Show in map

Copy link

Passenger vessels with a length greater than 150 meters that carry passengers shall not use the waterway when a wind speed of 17.2 m/s or more is forecast.

Alerts

No alerts currently active

[Regulation](#)

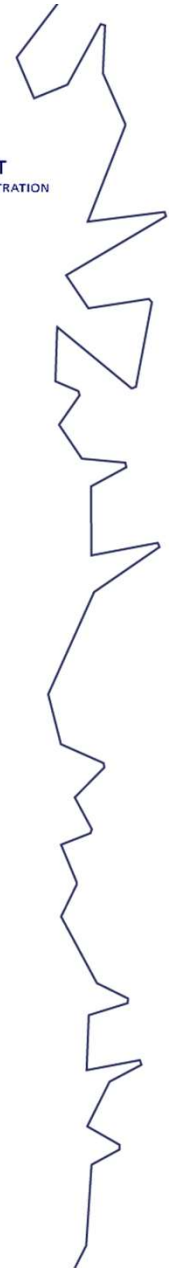
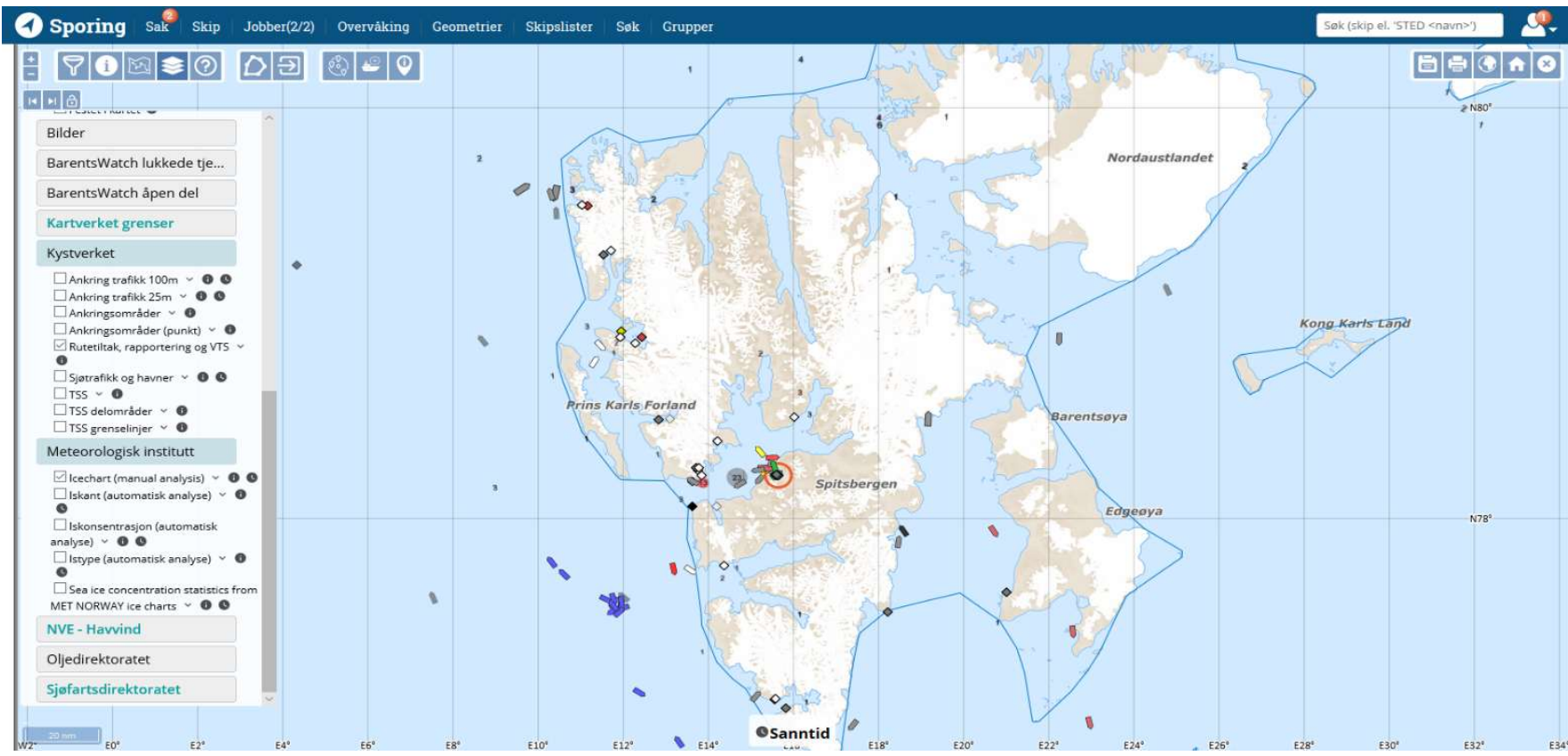
[Yr - weather warnings in Norway](#)

Data sources ^

Wind restrictions cruise
Latest update: Apr 15, 2026, 2:20 PM

Home

Width



Ice Categories



Projection: Polar Stereographic, True Scale at 90°N, WGS84 Scale: 16,580,902
 Map Corners:
 UL = 73°10'50.572"N, 81°55'51.534"W UR = 66°46'32.424"N, 85°38'11.481"E
 LR = 53°45'33.028"N, 38°47'58.662"E LL = 57°11'35.748"N, 29°8'32.1"W
 Coastline Data: GSHHS version 2.2.0 (<http://www.soest.hawaii.edu/wessel/gshhs/>)

Openernicus Sentinel-1 Radarsat-2 Sea Surface Temperature



Download digital reference routes (RTZ) directly to your **ECDIS/ navigation display on board**

routeinfo.no

Digital Sailing Routes for **mariners**

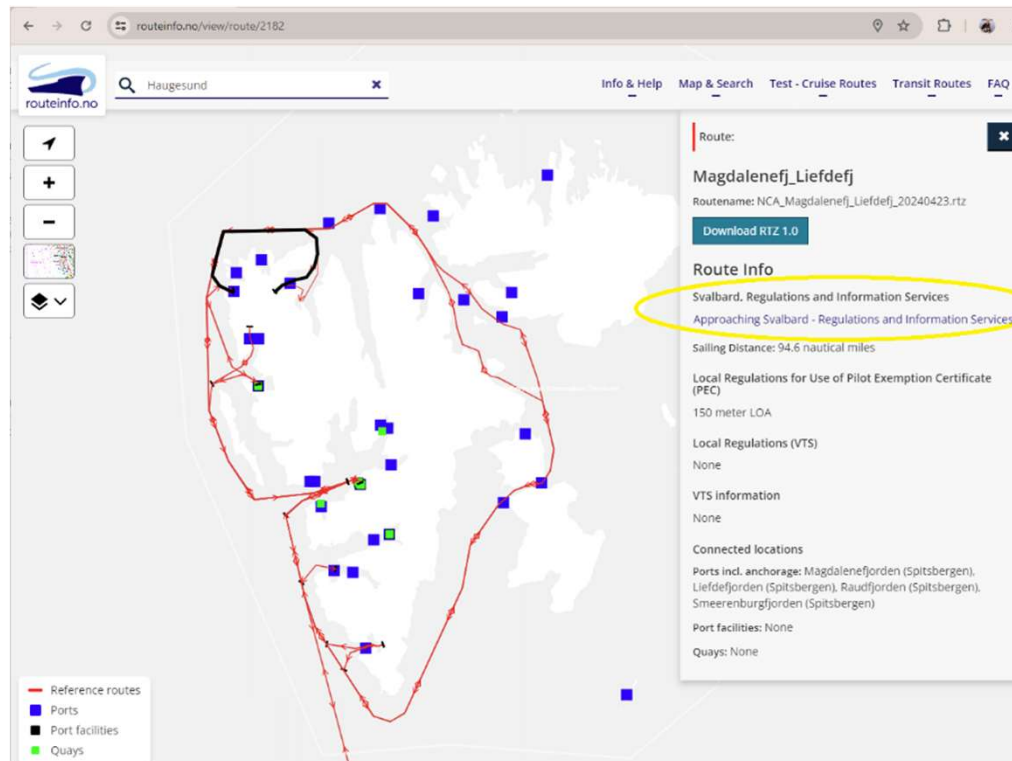
The NCA Digital Route Service offers over 600 sailing routes for the entire Norwegian coast. Get important voyage-related information at routeinfo.no.



A total of 24 reference routes have been published for Svalbard (23. apr 2024)

A review has been made of the need for nautical surveying of the routes that were sent to the nautical charts. The Norwegian Hydrographic Service has prioritized the Norwegian Coastal Administration's input and the routes have now been updated with new sea measurements of those we can publish.

Routes are quality assured for vessels up to 150 meters length and 9 meters draught.





KYSTVERKET
NORWEGIAN COASTAL ADMINISTRATION

Thank you for your attention

www.kystverket.no