









Welcome to Svalbard Airport



Ambition: To be an efficient and friendly start and end point for an arctic adventure

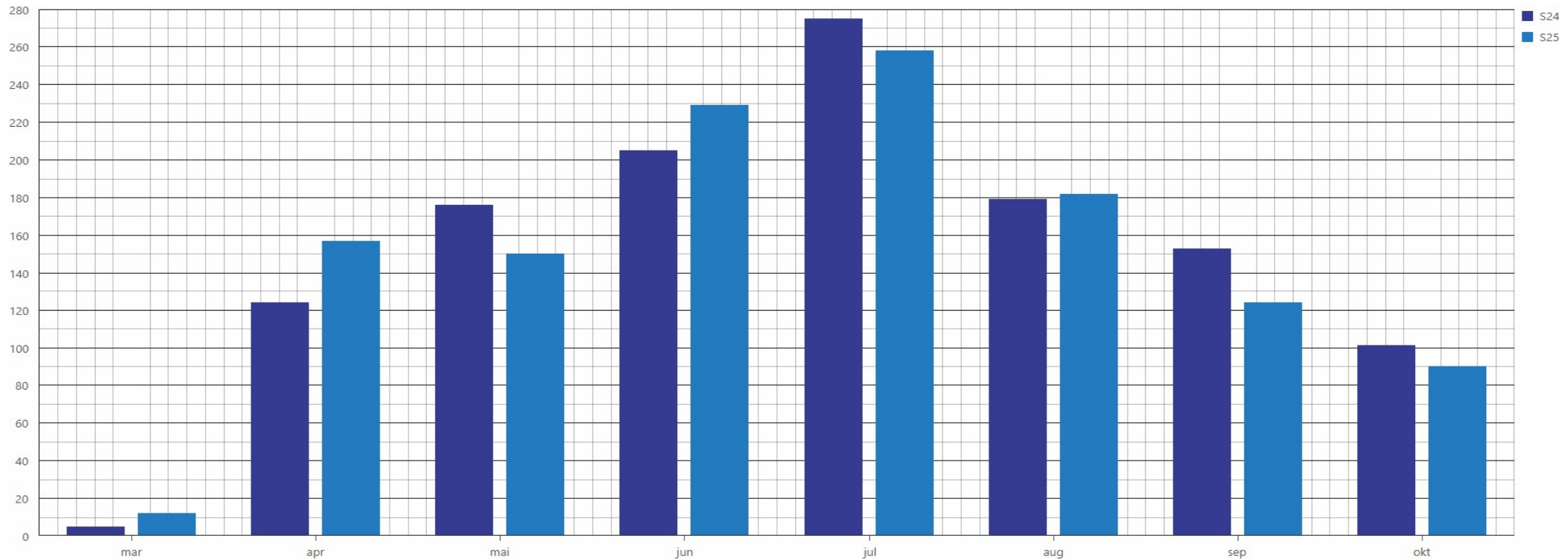
- Flying to & from Svalbard
 - Preparations and requirements
 - Insights and learnings
- Summer Season 2025
 - Capacity and traffic volumes by now

Information – Flying to & from Svalbard Airport

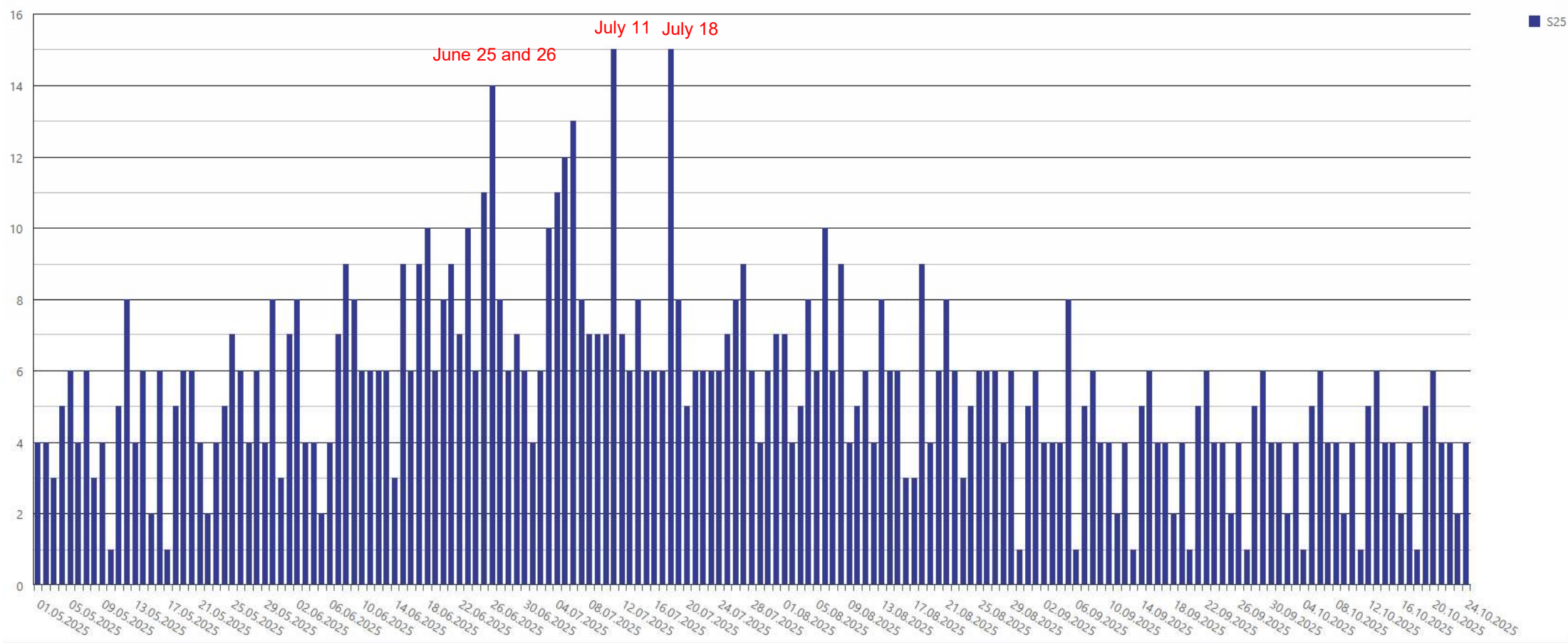
 Prerequisites	 Arrival Airport	  	Departure Airport 
<p>SLOTS (A/D) must be confirmed from ACN</p> <p><i>Applications after Feb 15 will be allocated according to the «first-come, first-serve» principle and only for times with available capacity and resources</i></p>	<p>Passengers: Might experience “Person- og varekontroll” upon arrival</p> <ul style="list-style-type: none"> - <i>Not active for all flights, but applies to scheduled flights, charter and GA</i> - <u>Identity verification (Police)</u>: passengers are led through new area for "personal control" before picking up luggage - <u>Customs check (Customs)</u>: passengers are selected for control after having collected their luggage 	<p>Bus transport between airport and harbour must be booked well in advance</p>	<p>The terminal is only open 2 hours before any scheduled departure (not open 24/7)</p> <p>Will be check-in machines available in Svalbardbutikken and in some hotels for passengers flying with SAS and Norwegian (not for other airlines)</p>
<p>Traffic Permit – must be obtained from CAA</p>	<p>Luggage: alternative transport to the harbour must be agreed in advance</p>		<p>Luggage: alternative transport from the harbour must be agreed in advance</p>
<p>Passenger lists must be sent to Police 2 workdays /48 hours ahead of arrival</p>	<ul style="list-style-type: none"> • Aircraft cleaning is not available • Garbage disposal is not possible • No water & toilet services available 		<p>Spare lithium ion and lithium metal batteries, including power banks are NOT allowed in check-in bags. <i>Must be carried in carry-on bags !!</i></p>
<p>Handling services must be requested & confirmed from Avinor/Airport</p>	<p>Not allowed to hand out clothes or other equipment in the terminal</p>		<p>Not allowed to hand out food and beverages in the terminal (neither for waiting in terminal before flight)</p>

Summer 2025 | SLOT Requests to Svalbard Airport

- Airport capacity within defined opening hours as in 2024
 - Limit of 6 flight arrivals per day + GA + Cargo & Mail
 - Minimum 30 minutes between one STD and next STA
- Status requested SLOTS – S25 (light blue) vs S24 (dark blue)



Summer 2025 | Busy days in the airport | Scheduled & Charter



WELCOME to LYR

Help your guests
to remember....



Traveling with electronic devices? Here's three steps to help you fly safely:

1 It is best to pack **lithium-powered devices** and accessories into your **carry-on bag**.



2 Electronic cigarettes, power banks and spare batteries **MUST be kept in your carry-on bag**.



ELECTRONIC
CIGARETTES



POWER
BANKS



SPARE
BATTERIES



Spare **lithium** ion and lithium metal **batteries**, including **powerbanks** are:

- NOT allowed in checked luggage.
(They are removed from bags without notice)
- *Must be carried in carry-on bags !!*



3 If you must pack your tablet, mobile or laptop in your checked luggage, be sure they are **completely turned off** (not in "hibernate" or "sleep" modes).



If in doubt, contact your airline.
More information: www.iata.org/ped





No drone zone

Unauthorized drone flying is prohibited in Longyearbyen, Svalbard airport and the surrounding mountains.

The prohibited area is a 5 km radius from the airport.

Drone flying in prohibited area can lead to:

- Criminal prosecution
- Confiscation of drone

For more information,
scan QR-kode



An aerial photograph of Svalbard Airport. The foreground shows a wide, paved runway and taxiway with yellow and red markings. To the left, there are several large hangars and a control tower. To the right, a small white aircraft is parked on the tarmac. In the background, a large body of water (Larsen Fjord) stretches towards a range of snow-capped mountains under a clear blue sky.

Thanks for listening

if you have any questions, please contact the airport administration:
svalbard.airport@avinor.no